

Mental Health and Healing Through Creative Arts. You remember the music that played during your best friendships and messiest breakups, on holidays and summer adventures. Music is an irreplaceable part of the human experience. Come to APICHA to learn more about how music can have a profound impact on your mental health, and how you can use this effect to give you peace of mind.

kenji takeda, MA, MT-BC, LCAT

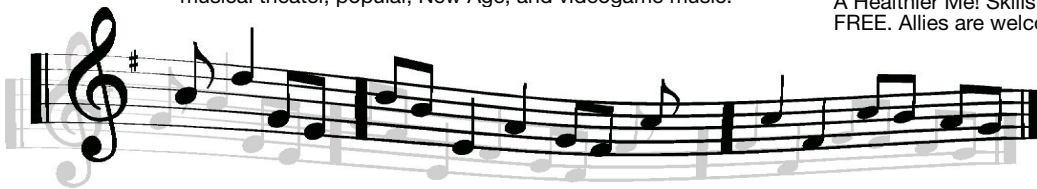
Kenji Takeda is a full-time music psychotherapist at Lifeline Center for Child Development in Queens, NY, for children with severe emotional disturbances. As a board certified licensed creative arts therapist, Kenji has worked with a variety of populations, including children and adults with developmental disabilities, adults with acute medical conditions, and adults with trauma and chronic mental illnesses. He holds a master's degree in music therapy from New York University and had presented internationally at various universities and conferences. He has also completed an advanced post-master's training program at Nordoff-Robbins Center for Music Therapy, a research, training, and treatment facility which emphasizes the importance of spontaneous musical interaction between therapist and client, at NYU Steinhardt school of Culture, Education, and Human Development. As an accomplished pianist, he holds piano performance degrees from Eastman School of Music and Royal Academy of Music in London, England, and has performed internationally with a repertoire that encompasses a wide range of styles and genres, including classical, jazz, musical theater, popular, New Age, and videogame music.



Mental Health and Healing Through Creative Arts. You remember the music that played during your best friendships and messiest breakups, on holidays and summer adventures. Music is an irreplaceable part of the human experience. Come to APICHA to learn more about how music can have a profound impact on your mental health, and how you can use this effect to give you peace of mind.

kenji takeda, MA, MT-BC, LCAT

Kenji Takeda is a full-time music psychotherapist at Lifeline Center for Child Development in Queens, NY, for children with severe emotional disturbances. As a board certified licensed creative arts therapist, Kenji has worked with a variety of populations, including children and adults with developmental disabilities, adults with acute medical conditions, and adults with trauma and chronic mental illnesses. He holds a master's degree in music therapy from New York University and had presented internationally at various universities and conferences. He has also completed an advanced post-master's training program at Nordoff-Robbins Center for Music Therapy, a research, training, and treatment facility which emphasizes the importance of spontaneous musical interaction between therapist and client, at NYU Steinhardt school of Culture, Education, and Human Development. As an accomplished pianist, he holds piano performance degrees from Eastman School of Music and Royal Academy of Music in London, England, and has performed internationally with a repertoire that encompasses a wide range of styles and genres, including classical, jazz, musical theater, popular, New Age, and videogame music.



PROJECT CONNECT PRESENTS

Music Therapy

Mental Health and Healing Through Creative Arts

A Healthier Me! Workshop Series

speaker: Kenji Takeda

date WEDNESDAY, 8/18

time 7pm

location APICHA

400 Broadway
entrance on 70 Walker St
N,R,Q,W,J,M,Z,A,C,E,6 to Canal St

project connect

Project Connect is a program created by APICHA to improve health for the lesbian, gay, bisexual, transgender, queer, questioning, intersex (LGBTQI) Asian and Pacific Islander (A&PI) communities. All A Healthier Me! Skills Workshops are tailored for LGBTQI A&PIs and FREE. Allies are welcome. DINNER IS PROVIDED.

Please RSVP

☎ 1.646.744.0990

✉ projectconnect@apicha.org

PROJECT CONNECT PRESENTS

Music Therapy

Mental Health and Healing Through Creative Arts

A Healthier Me! Workshop Series

speaker: Kenji Takeda

date WEDNESDAY, 8/18

time 7pm

location APICHA

400 Broadway
entrance on 70 Walker St
N,R,Q,W,J,M,Z,A,C,E,6 to Canal St

project connect

Project Connect is a program created by APICHA to improve health for the lesbian, gay, bisexual, transgender, queer, questioning, intersex (LGBTQI) Asian and Pacific Islander (A&PI) communities. All A Healthier Me! Skills Workshops are tailored for LGBTQI A&PIs and FREE. Allies are welcome. DINNER IS PROVIDED.

Please RSVP

☎ 1.646.744.0990

✉ projectconnect@apicha.org