

Ask me about...

Cervical Cancer Screening

What happens during a screening?

A **Pap smear** is a simple test to stay healthy by checking for early signs of cancer. Finding changes sooner makes it easier to treat. Feeling nervous is normal, but most people find it's over quickly.



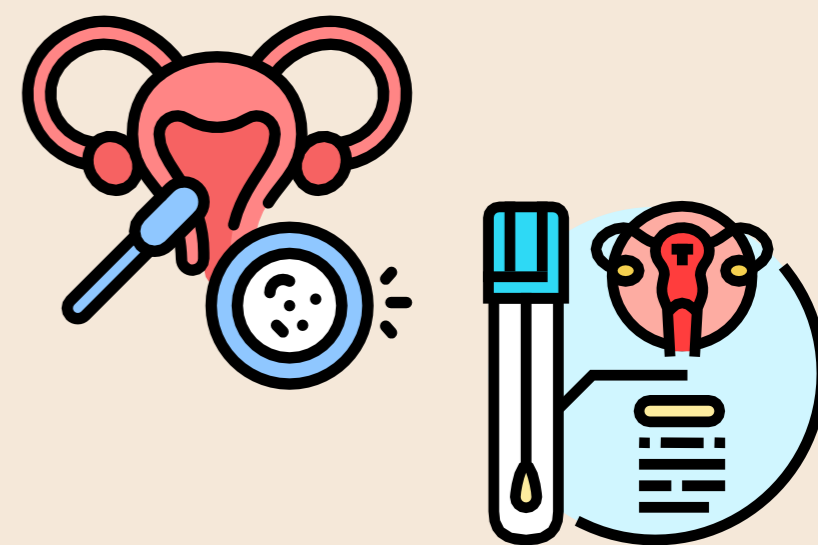
1. Preparation

You will undress from the waist down and wear a gown for privacy. You will lie on an exam table with your feet up to allow the doctor to see the cervix.



2. Cell Collection

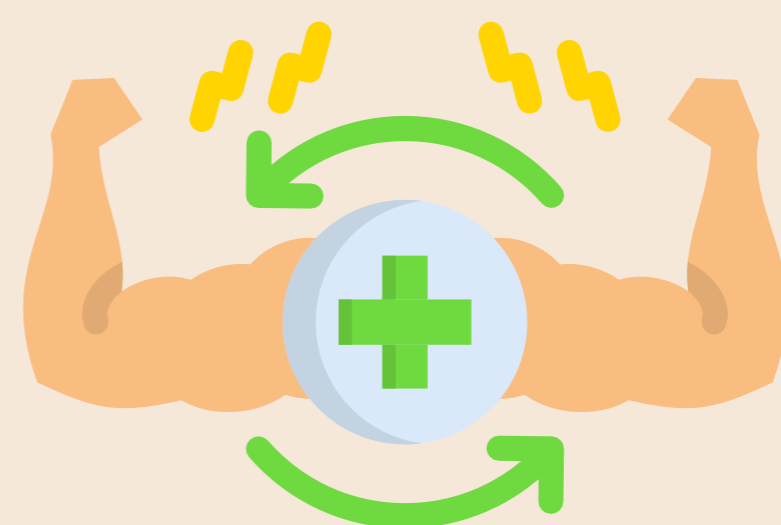
A small brush or spatula collects cells from the cervix. The sample is sent to a lab to check for abnormal cells. A speculum is used sometimes to help the doctor to see the cervix better.



3. After the Test

Light spotting may occur—underwear liners can help.

Results are usually ready in **1–3 weeks**.



Tips Before Your Appointment

- Avoid scheduling during **menstruation**.
- Refrain from sex, douching, or using genital products 1-2 days before the test.
- Bring any questions to your provider.



apicha
community health center